

## Specifications

### Engine

Model	Cummins6BT5.9-C		
Rated flywheel horse power	SAE	J1995 (Gross) J1349 (Net)	139HP(104KW)@2000rpm 136HP(101KW)@2000rpm
Max Torque	57.6kgf.m(417lbf.ft)@1600rpm		

### Hydraulic System

#### Main pump

Type	Two variable displacement piston pumps
Max. flow	2x220lpm
Sub-pump for pilot circuit	Gear pump
Cross-sensing & fuel saving pump system	

### Hydraulic motors

Travel	Two speed axial piston motor with counter balance valve and parking brake
Swing	Axial piston motor with automatic brake

### Relief valve settings

Boom	330kgf/cm <sup>2</sup>
Arm	300kgf/cm <sup>2</sup>
Bucket	280kgf/cm <sup>2</sup>
Travel	330kgf/cm <sup>2</sup>
Swing Circuit	240kgf/cm <sup>2</sup>
Pilot Circuit	35 kgf/cm <sup>2</sup>
Service valve	Installed

### Coolant & Lubricant Capacity

REFILLING	LITRE
Fuel tank	340
Engine coolant	35
Engine oil	15
Swing device-gear oil	5
Final drive (each)	5.8
Hydraulic system / Hydraulic tank	290 / 180

### Drives & Brakes

Drive method	Fully hydrostatic type
Drive motor	Axial piston motor in-shoe design
Reduction system	Planetary reduction gear
Max. drawbar pull	21100kgf(46,500lbf)
Max. travel speed (high/low)	5.3kmph/3.4kmph
Gradeability	35 Degree (70%)
Parking brake	Multi wet disc

### Undercarriage

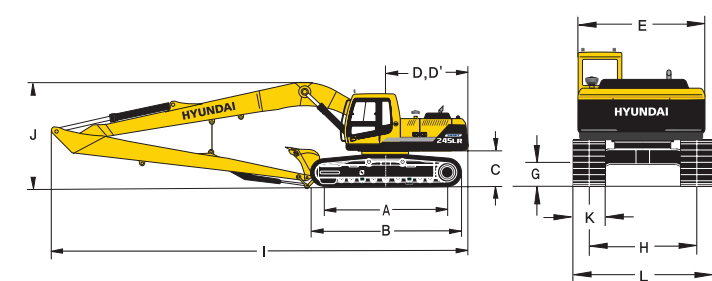
The X-leg type center frame is integrally welded with reinforced box-section track frames. The undercarriage includes lubricated rollers, idlers, track adjusters with shock absorbing spring and sprockets and track chain with triple grouser shoes.

Centre frame	X-leg type
Track frame	Pentagonal box type
No. of shoes on each side	49
No. of carrier rollers each side	2
No. of track rollers, each side	9
No. of rail gaurd each side	2

### Swing System

Swing motor	Axial piston motor
Swing reduction	Planetary gear reduction
Swing bearing lubrication	Grease bathed
Swing brake	Multi wet disc
Swing speed	11.0 rpm

### Dimensions



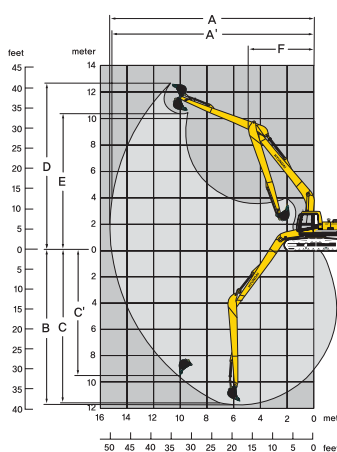
### Dimensions (mm)

A	Tumbler distance	3640
B	Overall length of the crawler	4440
C	Ground clearance of counter weight	1060
D	Tail Swing Radius	2830
E	Rear-end length	2770
F	Overall width of upper structure	2700
G	Overall height of cabin	2920
H	Min. ground clearance	480
H'	Trackgauge	2390
I	Overall length	12030
J	Overall height of boom	3280
K	Track shoe width	800
L	Overall width	3190

### Working Ranges (mm)

Boom length (std.)	8200
Arm length (std.)	6300

A	Maximum Digging Reach.	15220
A'	Digging Reach on Ground.	15120
B	Max Digging Depth	11760
B'	Max- Digging Depth (8' level).	11650
C	Vertical Digging Depth	9610
D	Maximum Digging Height	12550
E	Maximum Dumping Height.	10280
F	Minimum Swing Radius.	4870



**HYUNDAI**  
CONSTRUCTION EQUIPMENT  
INDIA



**245LR** SMART

ENGINE RATED POWER  
139HP (104KW) @2000 rpm

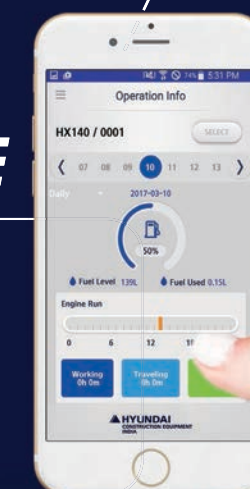
OPERATING WEIGHT  
24500 kg

BUCKET CAPACITY  
0.52m<sup>3</sup> GP (SAE Heaped)

**MOVING YOU FURTHER**

**HiMATE**

- Alarm Notification
- Maintenance tracking
- Working information
- Machine live tracking
- Machine Health status



Hyundai Construction Equipment India Pvt. Ltd.

#### Factory Location

Plot No. A-2, M.I.D.C. Chakan, Phase II,  
Village: Khalumbre, Taluka: Khed, Dist: Pune-410501  
E mail: hyundai.care@theconnectionsindia.com  
Tel.No.: 02135 301700 Fax No: 02135 301712  
Toll Free No.: 1800 209 8600

#### Please Contact

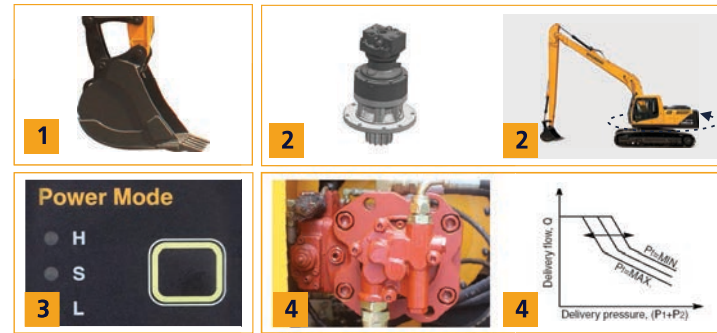
Scan the QR code  
with your phone  
camera & visit  
our website





### PRODUCTIVITY

1. Optimize bucket capacity
2. Reliable swing torque
3. Mode options to optimize power
4. Power control through CAPO system



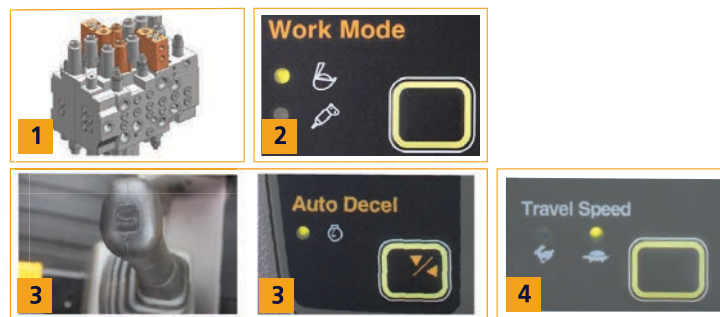
### STRUCTURE & DURABILITY

1. Reinforced front attachment
2. Reinforced idler area for high durability
3. Strong X-frame
4. Bucket link Reinforcement
5. Forge ring body



### EFFICIENCY

1. Newly designed main control valve & pump design
2. Exclusive breaker mode
3. One touch idle & Auto deceleration function
4. Dual travel speed for faster response



### SERVICEABILITY

1. Easy Serviceability
2. Clean fuel through fuel filler pump (optional)
3. Engine oil upto 250hrs and hydraulic oil upto 5000hrs
4. Extended machine warranty for 2 years / 5000 hrs\*
5. Maintenance management system
6. RMS optional



\*Terms & Conditions applicable



### OPERATOR CONVENIENCE

1. Biggest in class AC cabin & soft controls.
2. SMART digital colour display
3. Seat with 7 adjustments
4. Cabin Lights and music system



### SAFETY

1. Holding valve prevents attachments from drifting
2. Anti-restart System to avoid accidental damage.
3. Auto warning during machine malfunction
4. Inbuilt self-diagnostic
5. Battery disconnect switch to protect electrical system

